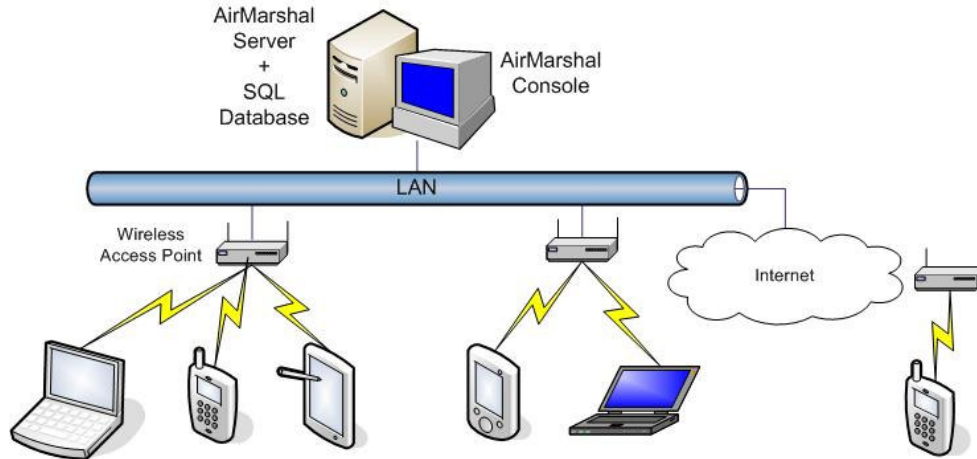
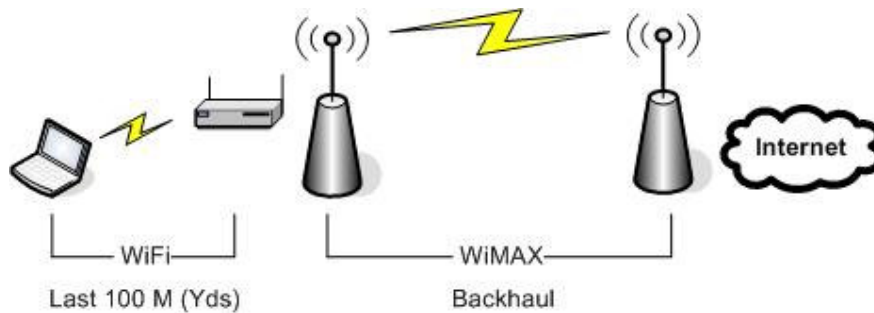


AirMarshal Wireless Management Software: Diagrams

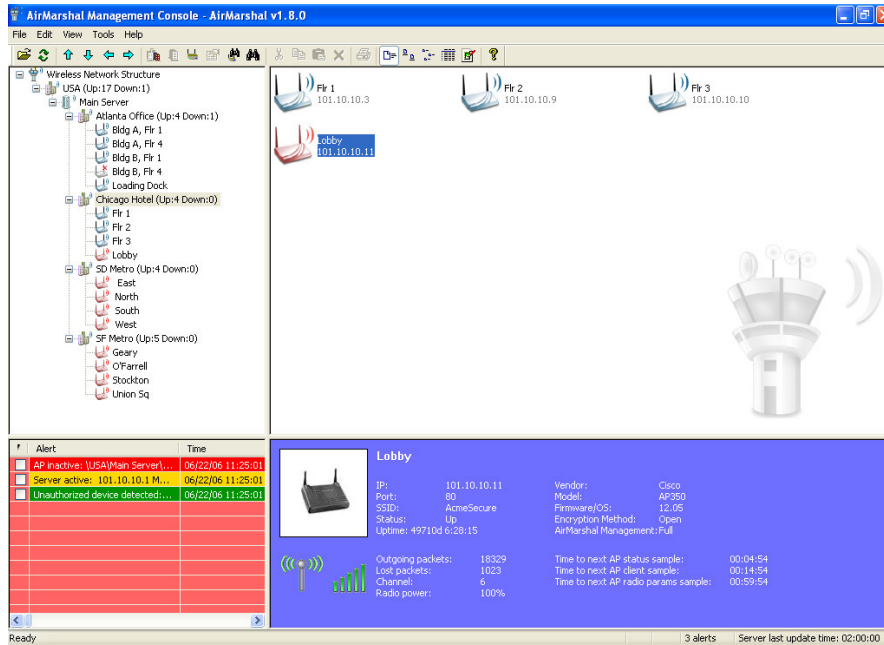


The AirMarshal Server and SQL Database must be installed on a machine connected to the network, while one or more AirMarshal Consoles may be installed on any machine with access to the database.

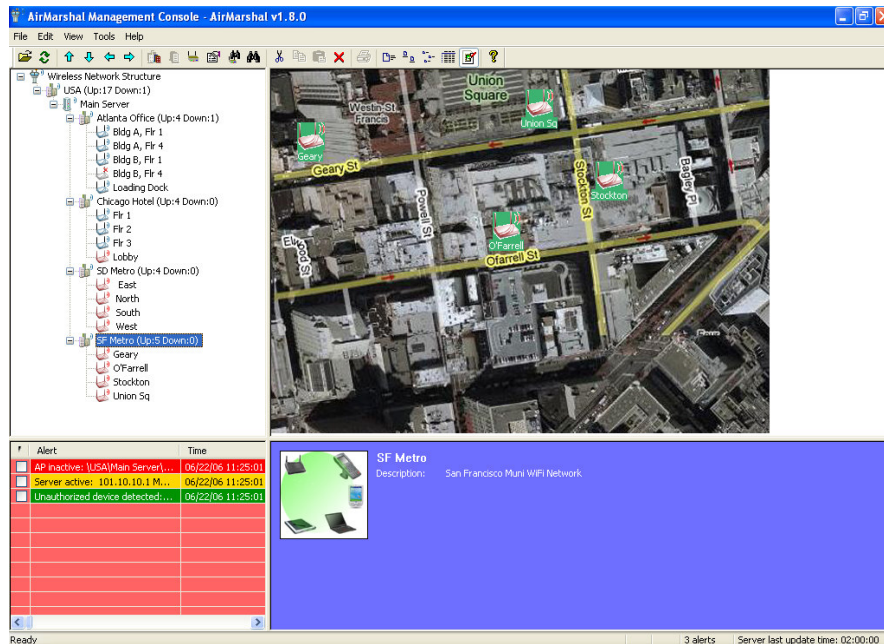


The AirMarshal Management Software can be used to manage any WiFi network regardless of whether the backhaul is WiMAX, Mesh or Cellular.

Wireless Command & Control

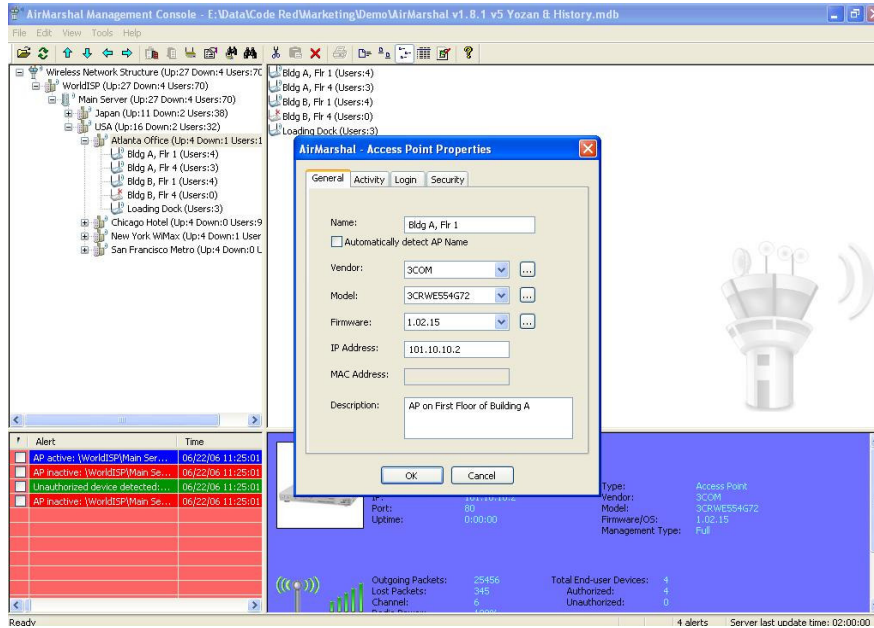


The high visibility graphic user interface allows network operators to quickly identify points of failure and provide remedies prior to customer tech support calls.

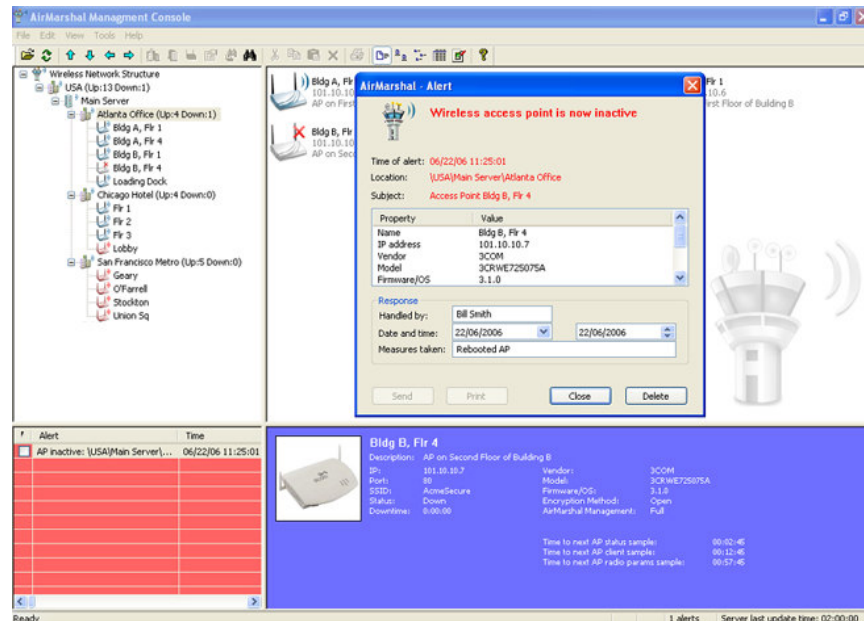


Graphic images such as aerial photographs, maps and floor plans can be used for pinpointing the physical location of network hardware and corresponding users.

Wireless Command & Control

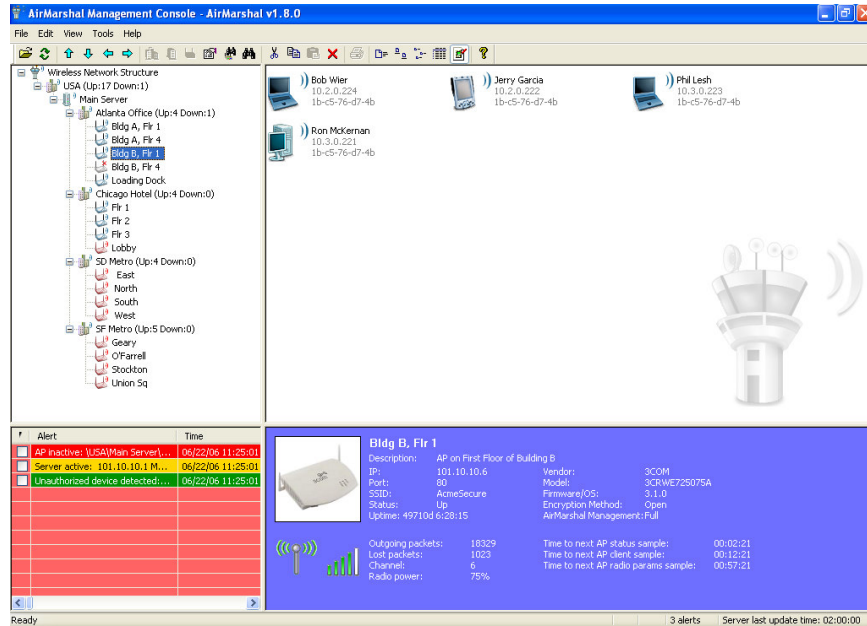


The intuitive Windows interface means a right click on any wireless access point gives the current status and allows for remote configuration and group operations.

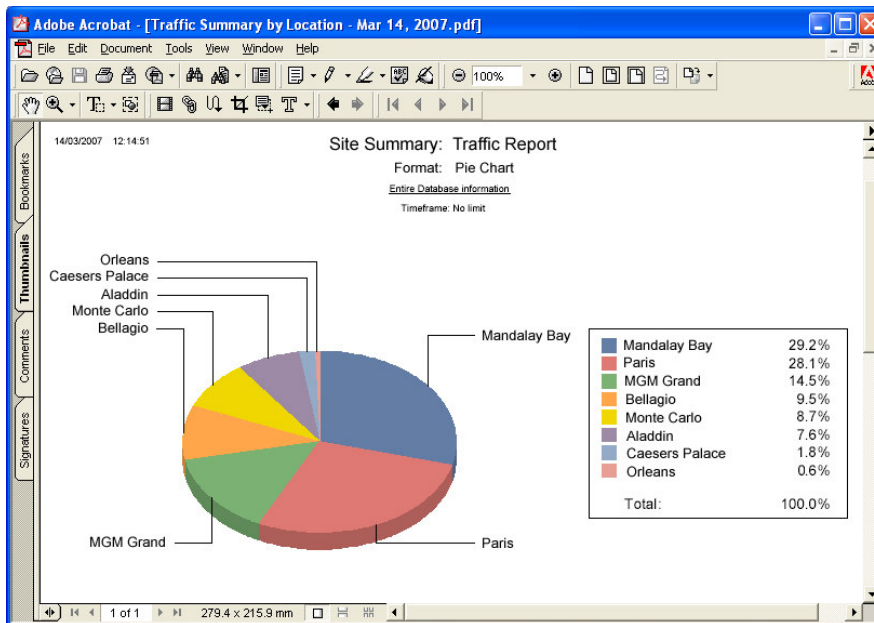


Real-time fault detection features accelerating alerts which can be sent to members of the operations staff by on-screen pop-up, email, SMS or voice message.

Wireless Command & Control



Wireless users are graphically displayed by location including information regarding User Name, MAC Address, IP Address and Security Settings.



Storage of resource allocation and usage data results in granular reports whose data can be exported into third party applications such as Business Intelligence, Fault Ticketing and Asset Management.